

## Display hidden or nonexistent (phantom) devices in Device Manager

Written by Administrator

Monday, 05 January 2009 12:32 - Last Updated Saturday, 10 January 2009 14:59

---

Some times when we try to install a new device on a system Windows display a message that the **device is already installed** or **the resources are used by another device**, which is not shown in Device Manager even if we select “

**Show Hidden Devices**

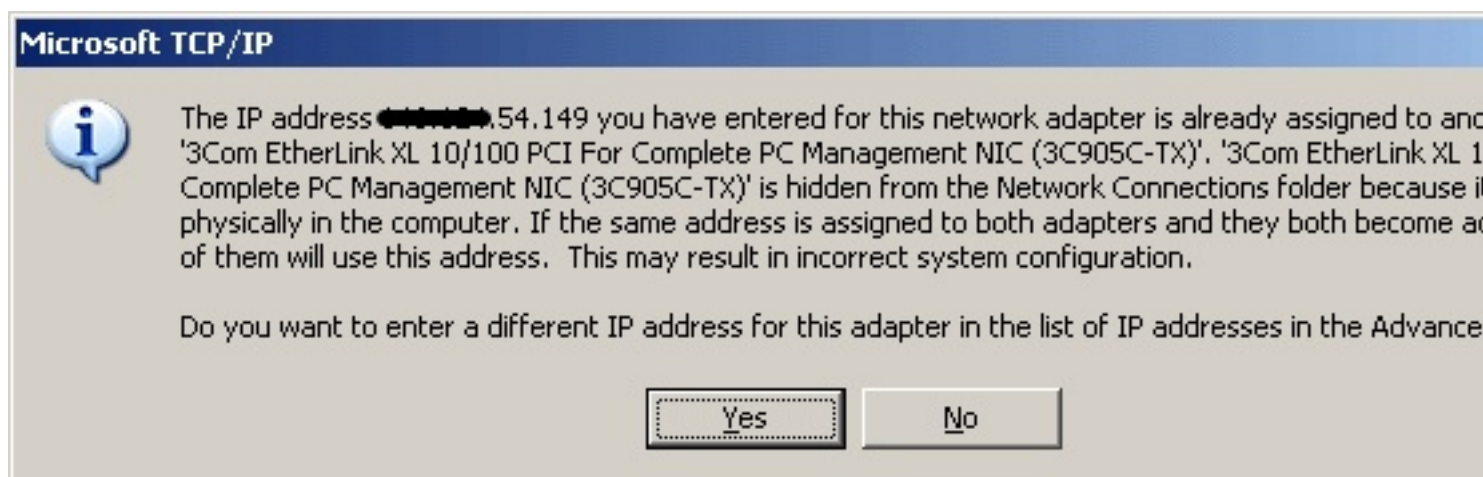
”

from the “

**View**

” menu.

The following screen shot is from the installation of a Network Card.



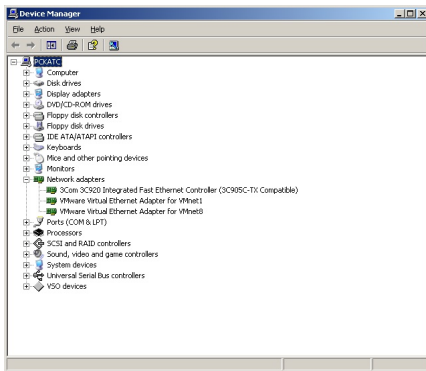
In this screenshot we see that when we try to enter the IP Address in the new card , we get the error message that this is already used by another card which is not in our system anymore and is not visible in Device Manager as we see in the following Screenshot.

## Display hidden or nonexistent (phantom) devices in Device Manager

Written by Administrator

Monday, 05 January 2009 12:32 - Last Updated Saturday, 10 January 2009 14:59

---



Following the steps bellow we can force our system to display this device in Device Manager. Then we will be able to remove it without using registry tricks.

Right click on My Computer and select Properties.

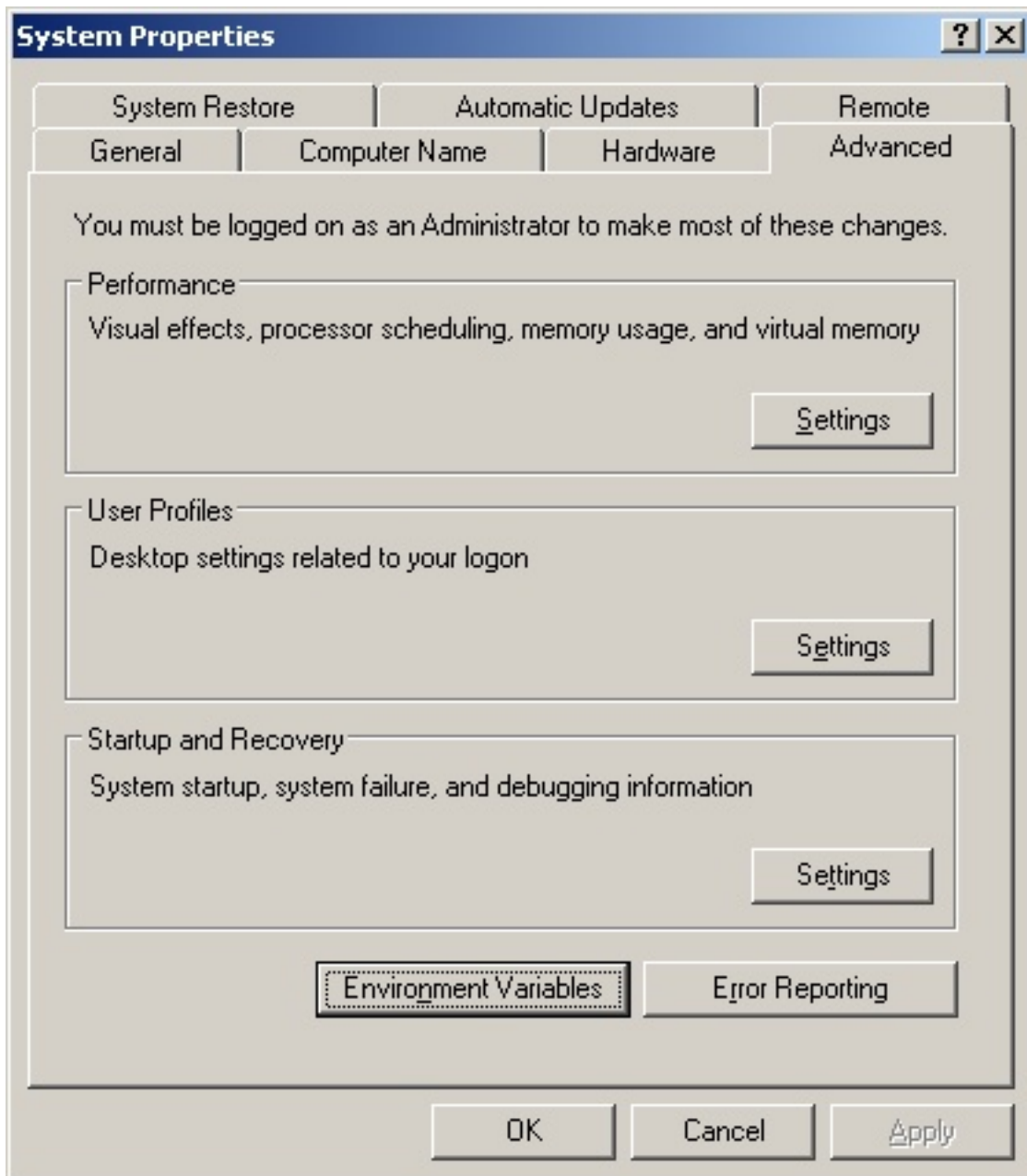
On the Advanced TAB select Environment Variables.

## Display hidden or nonexistent (phantom) devices in Device Manager

Written by Administrator

Monday, 05 January 2009 12:32 - Last Updated Saturday, 10 January 2009 14:59

---



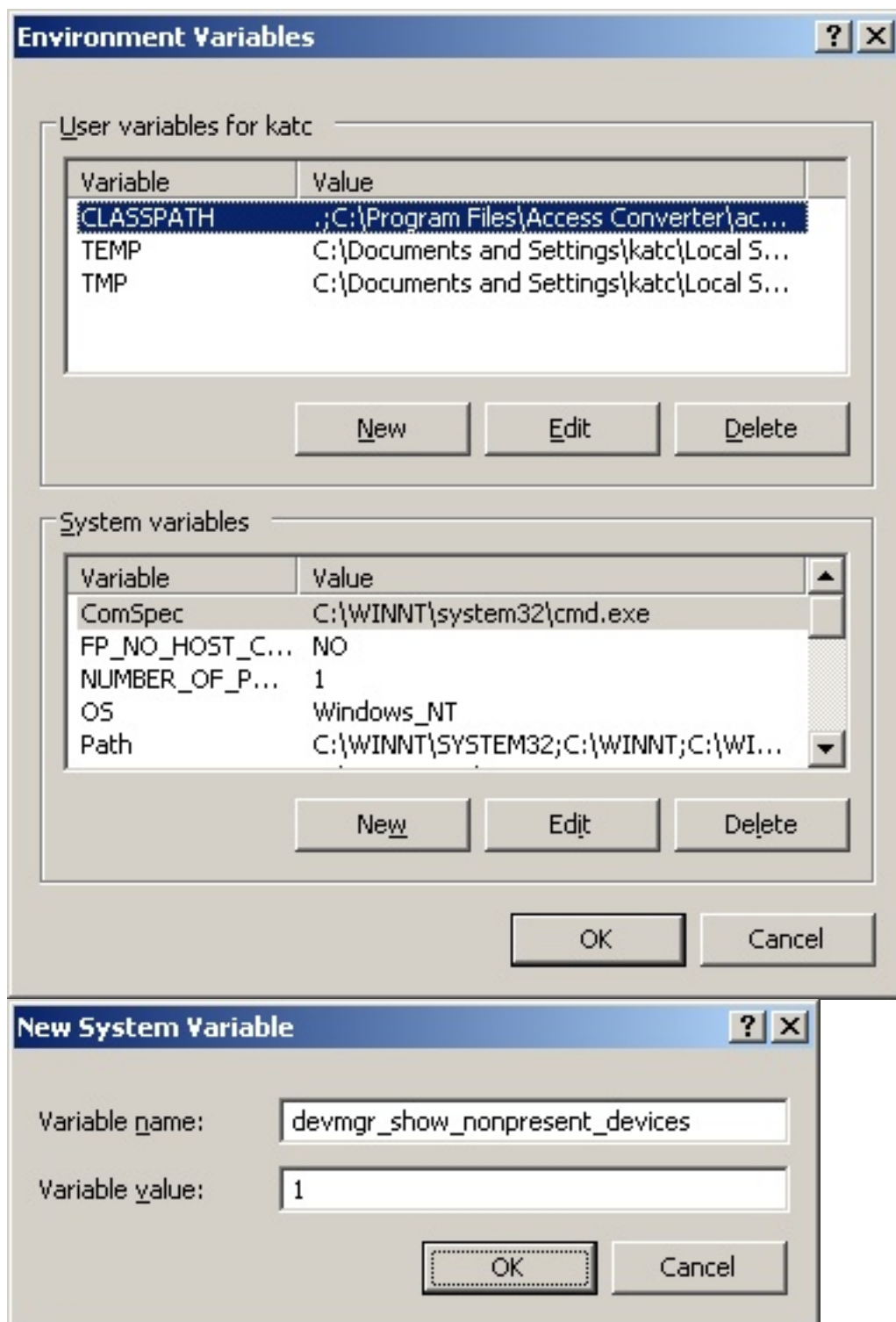
Click **New** in the **System variables** and add the variable "**devmgr\_show\_nonpresent\_devices**" without quotes. Give this variable the value "**1**" and click OK and OK, as in the following Screenshot.

## Display hidden or nonexistent (phantom) devices in Device Manager

Written by Administrator

Monday, 05 January 2009 12:32 - Last Updated Saturday, 10 January 2009 14:59

---



Now go again in **Device Manager**, select "**Show Hidden Devices**" from the View menu. Now the appearance is different and all the devices are visible as in the following screenshot. The nonexistent (phantom) devices are shown grayed out.

## Display hidden or nonexistent (phantom) devices in Device Manager

Written by Administrator

Monday, 05 January 2009 12:32 - Last Updated Saturday, 10 January 2009 14:59

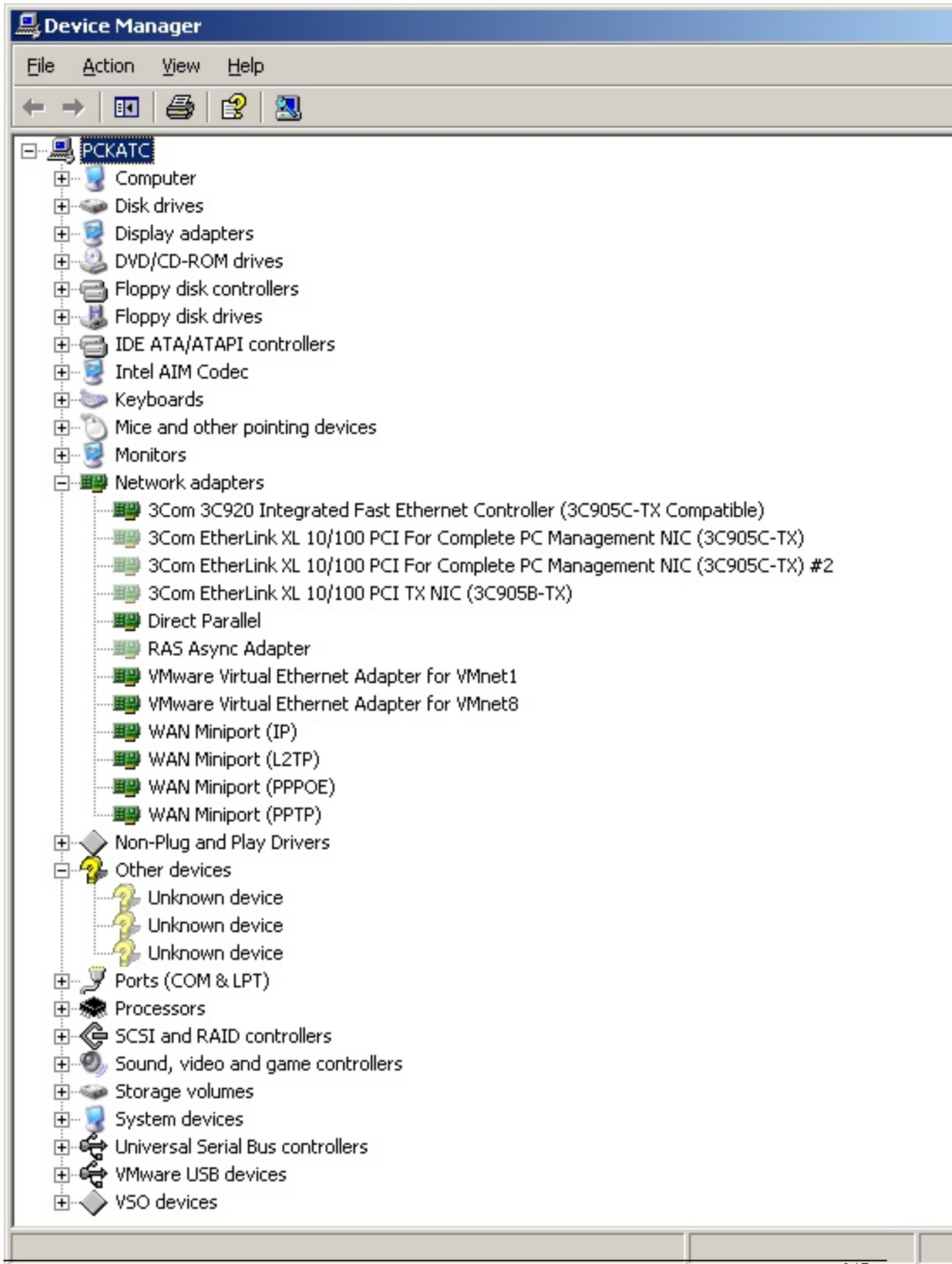
---

**NOTE:** In Windows 2000 a reboot is needed before opening “Device Manager”

## Display hidden or nonexistent (phantom) devices in Device Manager

Written by Administrator

Monday, 05 January 2009 12:32 - Last Updated Saturday, 10 January 2009 14:59



## Display hidden or nonexistent (phantom) devices in Device Manager

Written by Administrator

Monday, 05 January 2009 12:32 - Last Updated Saturday, 10 January 2009 14:59

---

Remove the appropriate device, reboot and leave Windows to detect the right device.